

$$\text{III (1) } 2 + 4 \times (-3) = 2 - 12 \\ = -10 //$$

$$(2) 15xy \div \frac{5}{8}y = 15xy \times \frac{8}{5y} \\ = 24x //$$

$$(3) \frac{1}{\sqrt{5}} = \frac{\sqrt{5}}{5} \\ \sqrt{5} = 2.236 \text{よ} //$$

$$\frac{2.236}{5} = 0.4472 \\ \approx 0.45 //$$

$$(4) \square ABCD \text{よ} //$$

$$\angle BAD = \angle DCB = 110^\circ \text{よ} //$$

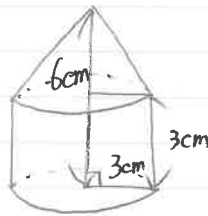
$$\triangle CBD \text{で}$$

$$x + 28 + 110 = 180$$

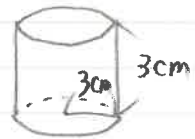
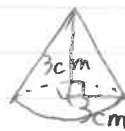
$$x = 42$$

$$\therefore 42 //$$

(5)



この立体の体積は



この2つの立体の体積の和を求めよ

$$(3 \times 3 \times \pi \times 3 \times \frac{1}{3}) + (3 \times 3 \times \pi \times 3)$$

$$= 9\pi + 27\pi$$

$$= 36\pi$$

$$\therefore 36\pi \text{cm}^3 //$$